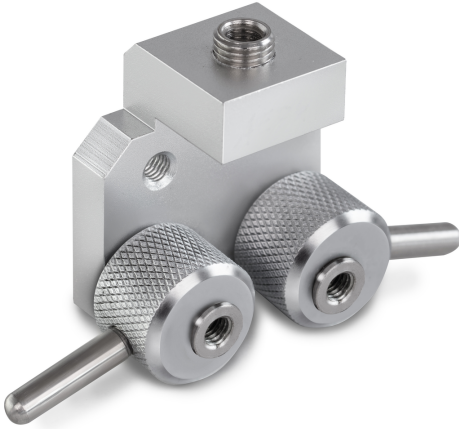


KERN AE 04



Belt tension clamp



Category

Brand	Sauter
Product category	Clamp
Product group	Strip tension clamp

Construction

Dimensions completely mounted (W×D×H)	50×40×24 mm
Material	aluminium
Mounting - force dissipation	Threaded hole M6
Tensile/compressive force [Max]	500 N
Maximum clamp width	15 mm
Clamping width	6 mm

Packing & Shipping

Readability force [d] (N)	1 d
Dimensions packaging (W×D×H)	50×40×24 mm
Net weight	0,12 kg
Shipping method	Parcel service
Net weight approx.	0,15 kg
Shipping weight	0,1 kg

Pictograms

STANDARD

